



INTERNATIONAL GENETIC EPIDEMIOLOGY SOCIETY

Newsletter – *July 2020 Post-Conference Edition*

Contents

[Letter from the President](#)

[Treasurer's Corner](#)

[Editor's Corner](#)

[Treasurer Election Results](#)

[Remembering Robert Igo Jr.](#)

[IGES 2020 online #iges20stay@home
- Meeting Report and Awards](#)

[News from IGES Committees](#)

[Listing of IGES Officials](#)

<p>Letter from the President Peter Kraft</p>
--

Dear IGES community,

The last eight months have been extraordinarily challenging for each of us in our own way, personally and professionally. But I have been heartened to see IGES members persevere in their learning, research, teaching and mentoring, while remaining mindful of the new constraints necessary for our collective physical and mental health. Many



members have rearranged their research to focus on COVID-19—it's inspiring to see those efforts already paying off.

I was particularly impressed by this year's virtual Annual Meeting. Not only did we manage to safely hold a scientific conference in the middle of a pandemic—after already undertaking one change of venue—but we made this the largest and most diverse Annual Meeting ever. We had 1,200 registrants from 37 countries across six continents, with an average of 500 attendees at each session. Although we are disappointed that we were not able to hold the meeting in Asia for the first time, we're glad that so many people from around the world were able to attend.

Moreover, as many people noted in their after-conference survey—thanks for returning those—there were some aspects of the virtual conference that we may want to adopt once we go back to in-person meetings (hopefully next year at the Estérel Resort outside of Montreal, October 16-18). These include how we take questions from the audience and making the presentations available for those who cannot travel to the conference. The IGES Board is exploring how we can incorporate some of this year's innovations into future meetings.

If you were not able to attend in person, you can still view recordings of the main sessions and the late-breaking talks on the genetic epidemiology of COVID-19 here: <http://ludmercentre.ca/iges-conference/>.

Thanks to all who made the Annual Meeting a success, including all attendees and presenters; the local organizing committees in Hong Kong (Maggie Wang, Pak Sham) and Seoul (Yun Joo Yoo, Sungho Won, Tae-Hwi Schwantes-An); Vanessa Olmo (who put together the platform for the web poster session on very short notice besides all of the behind-the-scenes organization); the Program Committee (chaired by Ching-Ti Liu); and especially past President Celia Greenwood, without whose tenacity and initiative the meeting would not have been possible.

Finally, we announced two new programs at the Annual Meeting, a pilot virtual mentoring program (<https://iges.memberclicks.net/mentoring-program>) and a remote journal club (<https://iges.memberclicks.net/journal-club>). We will be in touch soon with those who sent in applications for the mentorship program. If you did not get your application in by the August 1st deadline, stay tuned: we will be providing updates on the pilot's progress over the year and give you plenty of lead time to apply if we continue next year. As for the journal club, Fall dates will be announced soon: watch the website or follow @genepisociety on Twitter.

Stay safe and be well,

Pete

Peter Kraft

2020 IGES President

Treasurer's Corner
Julia Bailey



I am honored to take up the position of Treasurer for IGES. I am pleased to share with IGES members that we remain in good financial standing, and that we will continue to be vigilant in our negotiations and management of resources to maintain this good standing.

I am thrilled that DeLaine Anderson is remaining as IGES Administrative Support, we are fortunate to have her continued expertise.

I would like to remind IGES members that the 2020 IGES membership is still open – please go to <https://www.geneticepi.org/membership-fees-2020> for details. Please encourage your colleagues and collaborators to join as well. Membership allows us to plan things like meetings.

Don't forget that IGES continues to offer additional categories of registration for students and members from low- or lower-middle- income countries. As a reminder, IGES is a charitable and educational organization, and any contribution other than membership and meeting registration fee is tax-deductible. This can be done along with your membership renewal process.

Your continuous support of IGES is appreciated!

Julia Bailey

Treasurer

Editor's Corner, Genetic Epidemiology
Sanjay Shete

Dear IGES members, as an official journal for our society, Genetic Epidemiology invites you to submit your work in the fields of statistical, epidemiological and population genetics. Genetic Epidemiology is interested in both the methodological and applied papers. Examples include: applied genetic epidemiology papers (e.g. meta-analyses of GWAS, Secondary analyses of GWAS data), gene and environment interactions, risk prediction models, DNA methylation and RNA seq data analysis. Other novel work is welcome!

- The July 2020 issue can be found here:

<https://onlinelibrary.wiley.com/toc/10982272/2020/44/5>

Editor's pick paper from last two issues:

- **Fryett JJ, Morris AP, Cordell HJ. Investigation of prediction accuracy and the impact of sample size, ancestry, and tissue in transcriptome-wide association studies**

<https://onlinelibrary.wiley.com/doi/10.1002/gepi.22290>

- **Slob EA and Burgess S. A comparison of robust Mendelian randomization methods using summary data**

<https://onlinelibrary.wiley.com/doi/10.1002/gepi.22295>

Best Genetic Epidemiology paper award winner is: Lai Jiang and colleagues. Constrained instruments and their application to Mendelian randomization with pleiotropy.

<https://onlinelibrary.wiley.com/doi/10.1002/gepi.22184>

- Top-cited Genetic Epidemiology articles can be found here:

[https://onlinelibrary.wiley.com/doi/toc/10.1002/\(ISSN\)1098-2272.GEPI-top-cited](https://onlinelibrary.wiley.com/doi/toc/10.1002/(ISSN)1098-2272.GEPI-top-cited)

Benefits of Publishing in Genetic Epidemiology: There is no publishing cost for authors (e.g. page charges, black-white figures). In addition, every year, journal selects few papers for "open access" (unrestricted online access) publishing at no cost to the authors.

Please register on Wiley online library to **receive email alerts for new content** and saved searches. The website for registration is <http://onlinelibrary.wiley.com/user-registration>

AUTHOR SERVICES: Wiley has an updated list of services it offers our authors. For more information, please visit <http://authorservices.wiley.com>

We now offer Kudos (<https://www.growkudos.com/>), a social media service that provides authors with a free set of tools to explain and share their published work for greater usage and impact. Authors also receive access to a publication dashboard where they can view downloads, citations, and altmetrics for their articles.

This is your journal: make it reflect your work by submitting your papers to Genetic Epidemiology!

Thanks and I look forward to your active participation in the journal.

Sanjay Shete
Editor-in-Chief
sshete@mdanderson.org

IGES 2020 Membership Drive

Dear IGES members,

Don't forget to renew your membership for 2020! Registration/renewal opened on November 1st 2019. The early-bird membership fee was available until January 31, 2020.

Please observe the fact that membership registration and annual meeting registration have been separate since 2014. Therefore you are NOT automatically registered as an IGES member just with meeting attendance. A separate registration for IGES Society membership is necessary:

<https://www.geneticepi.org>

Rates for 2020 IGES membership:

- Regular member **US\$130**, if paid by January 31, 2020 (early-bird)
- Regular member **US\$155** if paid on or after February 1, 2020
- Student and Post-Doctoral* member with online access to Journal **US\$68**, rate continues all year but please aim to pay by January 31, 2020
- Student and Post-Doctoral* member **without** online access to Journal **US\$25**, rate continues all year but please aim to pay by January 31, 2020
- Low- or lower-middle- income country* member with online access to Journal **US\$68**; without online access to Journal **US\$25**.

* For eligibility see IGES website

Benefits of IGES membership:

- Receive complimentary on-line access to **Genetic Epidemiology** (the official IGES journal)
- Post announcements and job adverts on the IGES website at **no cost**
- Attend annual IGES scientific meetings at **reduced cost**
- Interact with **scientific peers** worldwide
- Learn about the **latest methodological developments, software, and research findings** in genetic epidemiology
- Help the society **promote** the field of **genetic epidemiology** internationally
- Continuous regular membership of IGES for 5 years or more makes you eligible for the title of "**Fellow Member of IGES**". See <https://www.geneticepi.org/iges-fellow-members>

Your IGES dues help to support...

- **Travel expenses** to the annual IGES meeting for worthy students in financial need
- **Continuing education** and outreach to the scientific community about the discipline, analytical methods, and software used in genetic epidemiology through workshops and classes
- Subsidies for **student subscriptions** to the journal *Genetic Epidemiology*

IGES 2020 Treasurer Election Election Results

Thank you to all the members who cast their votes in the recent ballot.

We are delighted to announce that Julia Bailey has been unanimously elected as the new IGES treasurer. Julia's term of office started on 1st July 2020. We thank Julia for her willingness to serve, and many thanks also go to the outgoing treasurer, Mariza de Andrade, for her service over the past 9 years.



[The ballot paper for these elections was sent out by SurveyMonkey. Note that all members may opt-out of emails from IGES sent via sources such as MemberClicks, Cvent and SurveyMonkey. However, please note that by opting out, you will no longer receive ANY mail at all from IGES, including important election announcements and ballot links, as well as the newsletters and our annual meeting announcements].

Remembering genetic epidemiologist Robert Igo, Jr.

Assistant Professor Robert (Rob) P. Igo, Jr. was known as a thoughtful genetic epidemiologist who embodied the spirit of team science by his colleagues in the Department of Population and Quantitative Health Sciences (PQHS) at Case Western Reserve University (CWRU). He was an active IGES member who served on the ELSI committee for 8 years. He passed away in the middle of July 2020.

Igo had many professional accomplishments, and was known for his generous spirit and his understated—and quirky—sense of humor. His colleagues relied on him as a principal or co-investigator who brought integrity and novel insight to every collaboration.

“Rob was an integral part of our team—a researcher, author, professor and all-around great colleague,” shared Jonathan Haines, Chair of the Department of Population and Quantitative Health Sciences. “He brought levity and gravity to the mix, an unusual combination. Everyone who knew him will say that above all else, he was kind. We mourn his loss and extend our condolences to his wife, family and loved ones.”

After earning a PhD in Anatomy from the University of Utah and a MS in Biostatistics from the University of Washington, Igo came to CWRU as a postdoctoral fellow in 2005, was named an instructor in 2007 and promoted to assistant professor two years later.

Over the years, he built a reputation as an expert in the theory and application of genomic analysis to explore genetic determinants of human health. Igo worked with research teams and several consortia concerned with common and complex diseases including glaucoma, Fuchs endothelial corneal dystrophy, age-related macular degeneration and Alzheimer’s disease.

His collaborations resulted in significant publications that advanced understanding of the genetic causes or influences of these conditions. He was a lead or collaborating author on more than 60 peer reviewed articles, with a recent collection of papers in influential journals, echoing the trajectory of his career.

“The world lost a gentle, bright soul this past weekend,” said Jessica Cooke Bailey, a colleague of Igo and assistant professor in the PQHS. “I don’t know what we’ll do without him, but my hope is that we will find a way to honor his memory by, at the very least, raising awareness about mental health issues among friends and colleagues. We have lost a humble and humorous friend and colleague. We will hold Rob in our hearts.”

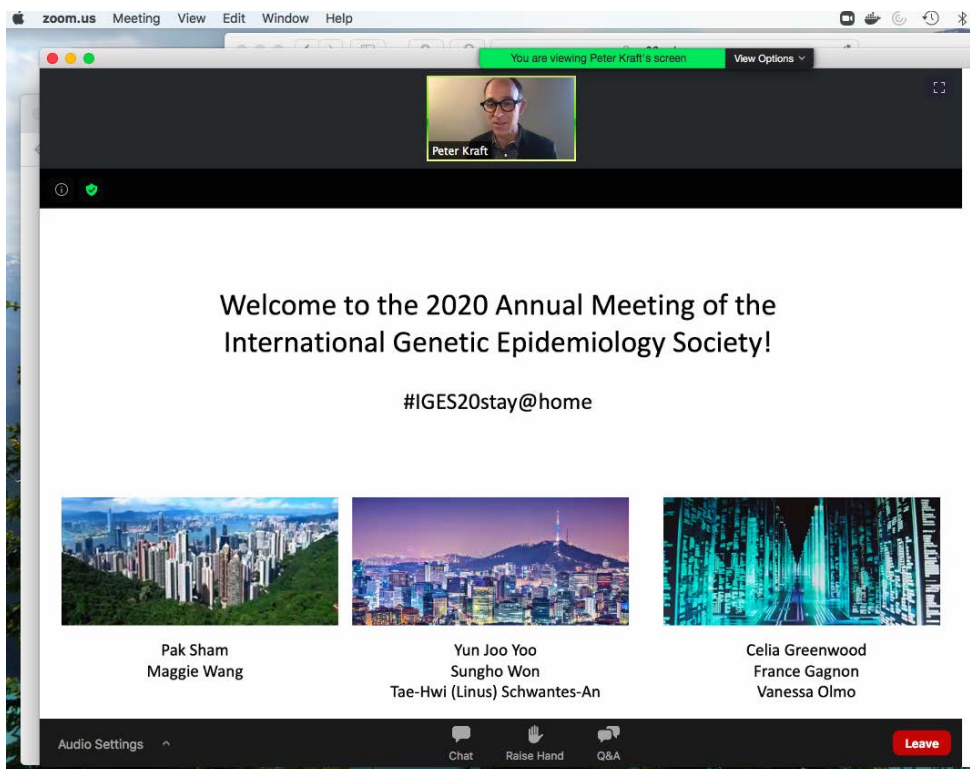
His students regularly commented on his ability to help them navigate complex concepts by making their studies applicable to real-world research. During his CWRU career, he developed and taught several courses and served on dissertation committees for many students who have gone on to careers in academia and industry.

“Rob was the big brother I needed as I was getting through my dissertation,” said friend and colleague Laura Kopplin of the University of Wisconsin School of Medicine. “He was the guy I could go to when I had something to share, or when life wasn’t going my way. He stood in for my formal mentor at my ‘hooding’—when you are recognized as a PhD. It was special that it was both a mentor and friend who played that role for me.”

Outside of work, Igo was a naturalist. He enjoyed biking and hiking and took beautiful photos of landscapes, flowers, and his beloved Seattle. He regularly played board games with a group of friends, and he was a “cat person.” He regularly drew cat doodles, typically when meetings were getting too serious.

IGES 2020 Online Meeting #iges20stay@home Meeting Report and Award Winners

July 2020 saw our first ever virtual IGES meeting, with videoconferencing on July 2nd - 4th, including keynote speakers, the Presidential address, and the Neel and Williams award finalists.

A screenshot of a Zoom meeting window displaying a slide titled "Overview of schedule". The slide features the IGES logo and a list of activities for the meeting. A "Recording" indicator is visible in the top left corner of the slide area. The Zoom toolbar at the bottom of the window shows the "Leave" button.

INTERNATIONAL GENETIC EPIDEMIOLOGY SOCIETY

Overview of schedule

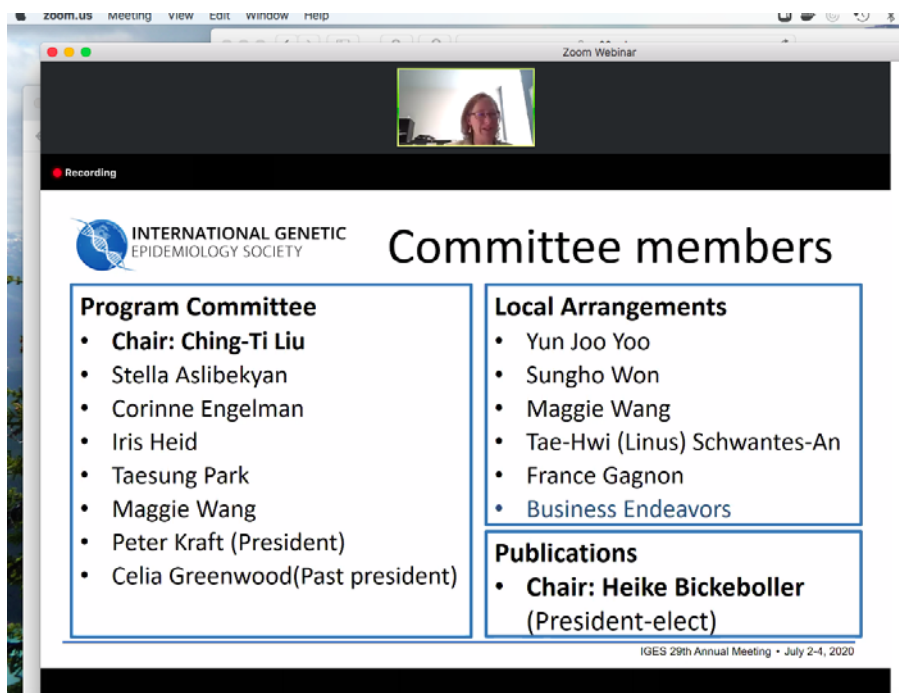
- July 2, 3, 4: plenary scientific sessions
 - Invited speakers
 - Neel & Williams finalists
 - Special session on COVID-19
- Contributed abstracts
 - Lightning poster talks
 - Poster competition for trainees
 - Poster forum for online comments & questions
- Mentoring sessions
- Social chat sessions
- Job/Chat Forums

IGES 29th Annual Meeting • July 2-4, 2020

zoom.us Meeting view edit window help

Zoom Webinar

Recording



**INTERNATIONAL GENETIC
EPIDEMIOLOGY SOCIETY**

Committee members

Program Committee

- **Chair: Ching-Ti Liu**
- Stella Aslibekyan
- Corinne Engelman
- Iris Heid
- Taesung Park
- Maggie Wang
- Peter Kraft (President)
- Celia Greenwood (Past president)

Local Arrangements

- Yun Joo Yoo
- Sungho Won
- Maggie Wang
- Tae-Hwi (Linus) Schwantes-An
- France Gagnon
- Business Endeavors

Publications

- **Chair: Heike Bickeboller**
(President-elect)

IGES 29th Annual Meeting • July 2-4, 2020

Recording

**INTERNATIONAL GENETIC
EPIDEMIOLOGY SOCIETY**

Abstract submitters

Country of Institution	Number	Country of Institution	Number
Australia	2	Qatar	2
Canada	17	South Africa	1
China	12	South Korea	12
Denmark	1	Taiwan	1
France	2	Thailand	1
Germany	18	Turkey	1
Hong Kong	2	United Kingdom	21
India	4	United States	67
Malaysia	1		
Netherlands	2		

Recording

**INTERNATIONAL GENETIC
EPIDEMIOLOGY SOCIETY**

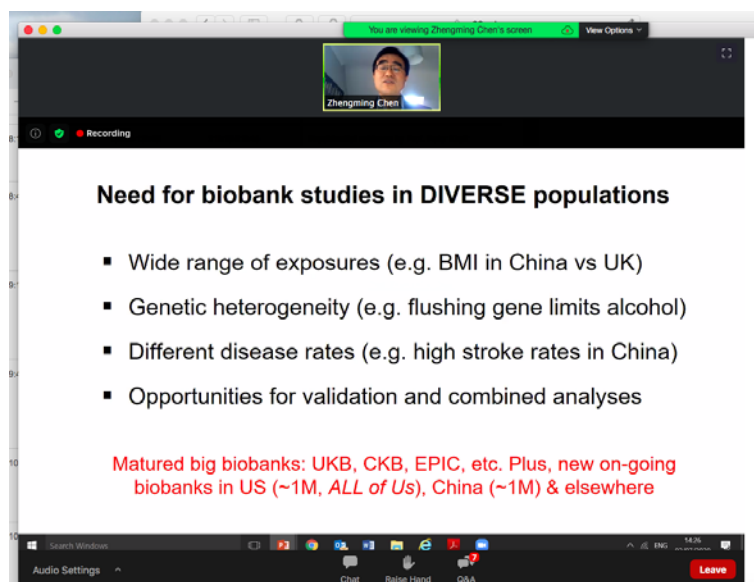
Attendees

Country	#	Country	#	Country	#
Australia	10	Ireland	4	Singapore	8
Brazil	3	Italy	7	Spain	11
Canada	126	Japan	2	Sweden	6
China	45	Korea	18	Switzerland	11
Cyprus	7	Malaysia	3	Taiwan	3
Denmark	15	Mexico	2	Thailand	4
Finland	20	Netherlands	18	Turkey	2
Germany	29	Nigeria	3	United Kingdom	160
Hong Kong	14	Philippines	2	United States	409
India	6	Qatar	4	Countries with 1 attendee	8

Total 968

IGES 29th Annual Meeting • July 2-4, 2020

(Selected) Invited Talks:



You are viewing Zhengming Chen's screen

Recording

Need for biobank studies in DIVERSE populations

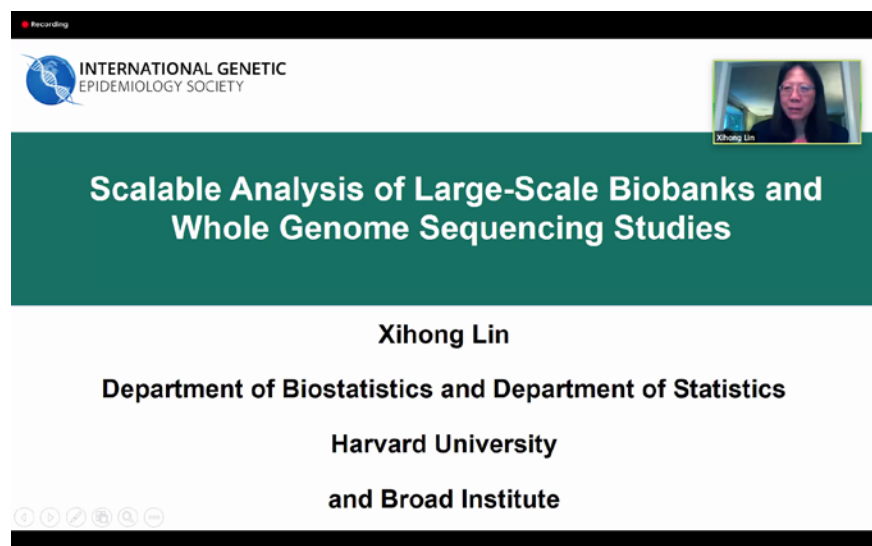
- Wide range of exposures (e.g. BMI in China vs UK)
- Genetic heterogeneity (e.g. flushing gene limits alcohol)
- Different disease rates (e.g. high stroke rates in China)
- Opportunities for validation and combined analyses

Matured big biobanks: UKB, CKB, EPIC, etc. Plus, new on-going biobanks in US (~1M, ALL of Us), China (~1M) & elsewhere

Search Windows

Audio Settings

Chat Raise Hand Q&A Leave



Recording

INTERNATIONAL GENETIC EPIDEMIOLOGY SOCIETY

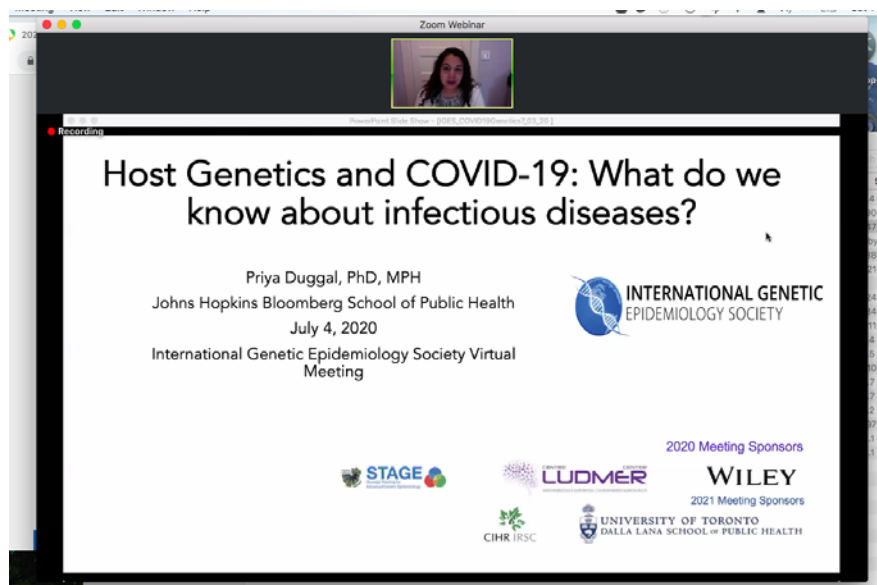
Scalable Analysis of Large-Scale Biobanks and Whole Genome Sequencing Studies

Xihong Lin

Department of Biostatistics and Department of Statistics

Harvard University

and Broad Institute



Zoom Webinar

Recording

Host Genetics and COVID-19: What do we know about infectious diseases?

Priya Duggal, PhD, MPH
Johns Hopkins Bloomberg School of Public Health
July 4, 2020
International Genetic Epidemiology Society Virtual Meeting

INTERNATIONAL GENETIC EPIDEMIOLOGY SOCIETY

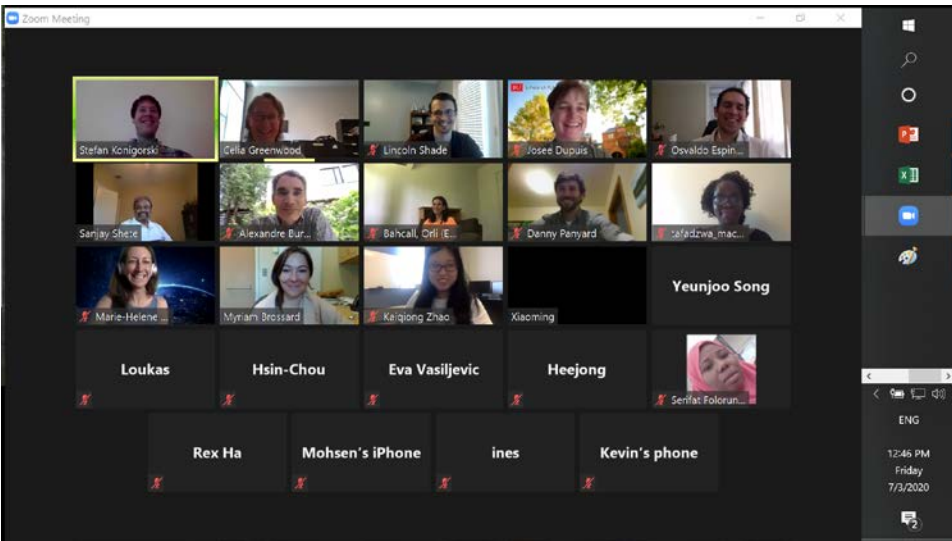
2020 Meeting Sponsors

STAGE LUDMER WILEY

2021 Meeting Sponsors

CIHR IRSC UNIVERSITY OF TORONTO DALLA LANA SCHOOL OF PUBLIC HEALTH

Social hours:





Award winners:

Zoom Webinar

Recording

Roger Williams Award

- The **Roger Williams Award** is presented to an outstanding oral presentation by a student enrolled in a bachelor, master or PhD program at the time of registration. The prize includes a check for \$1000 and a certificate.
- This year's award goes to....

Grace Png
"Exploring the Genetic Architecture of the Human Neurological Proteome using Whole Genome Sequencing"

- Congratulations!

IGES 29th Annual Meeting • July 2-3, 2020

Zoom Webinar

Recording

James V. Neel Award

- The **James V. Neel Award** is presented to an outstanding oral presentation by a post-doctoral fellow within 5 years of PhD completion at the time of registration. The prize includes a check for \$1000 and a certificate.
- This year's award goes to....

Myriam Brossard
"Characterization of Direct and/or Indirect Genetic Associations for Multiple Traits in Longitudinal Studies of Disease Progression"

- Congratulations!

IGES 29th Annual Meeting • July 2-3, 2020

Zoom Webinar

Recording

INTERNATIONAL GENETIC
EPIDEMIOLOGY SOCIETY

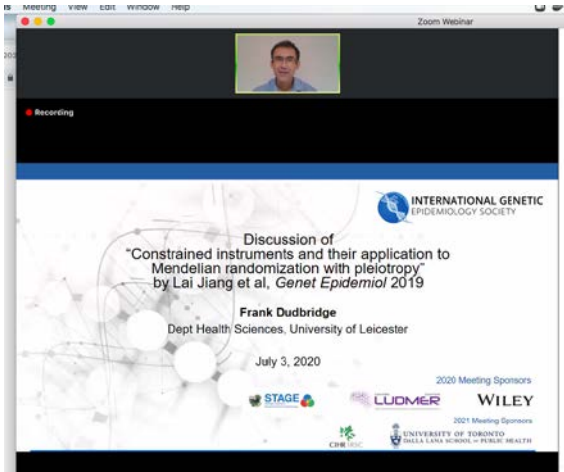
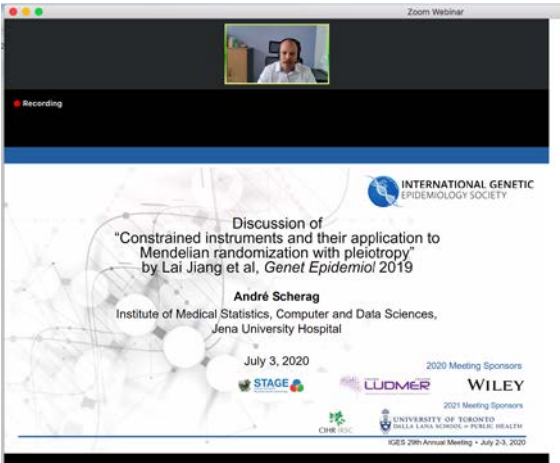
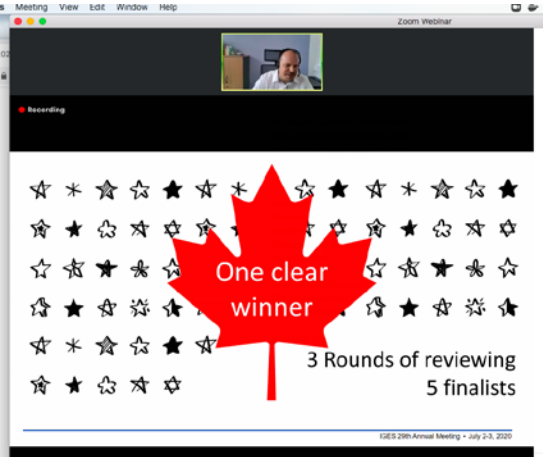
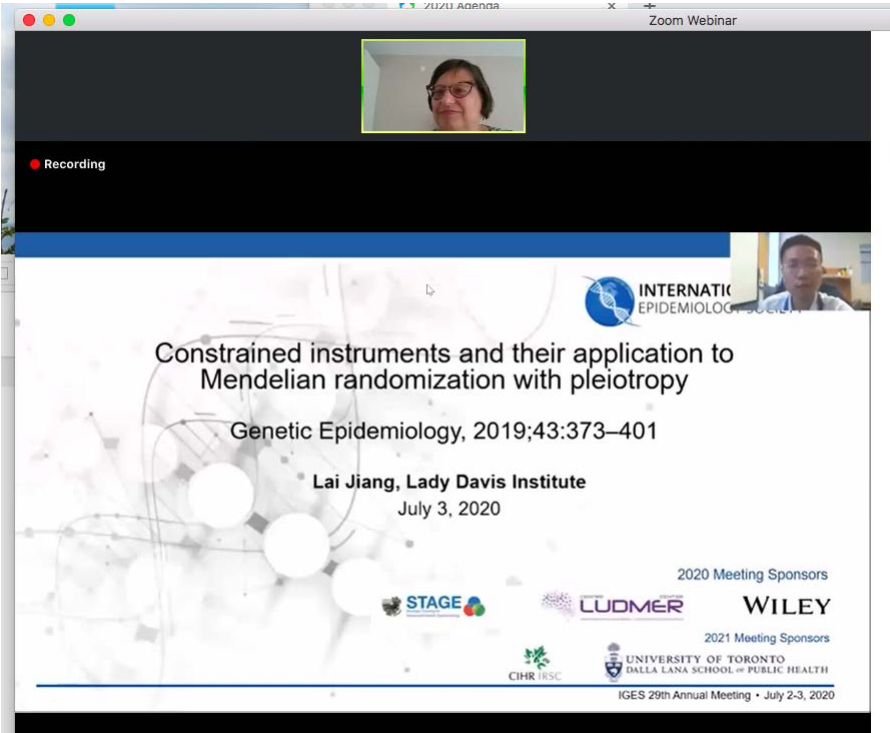
Poster award winners

STAGE
Strategic Training for
Advanced Genetic Epidemiology

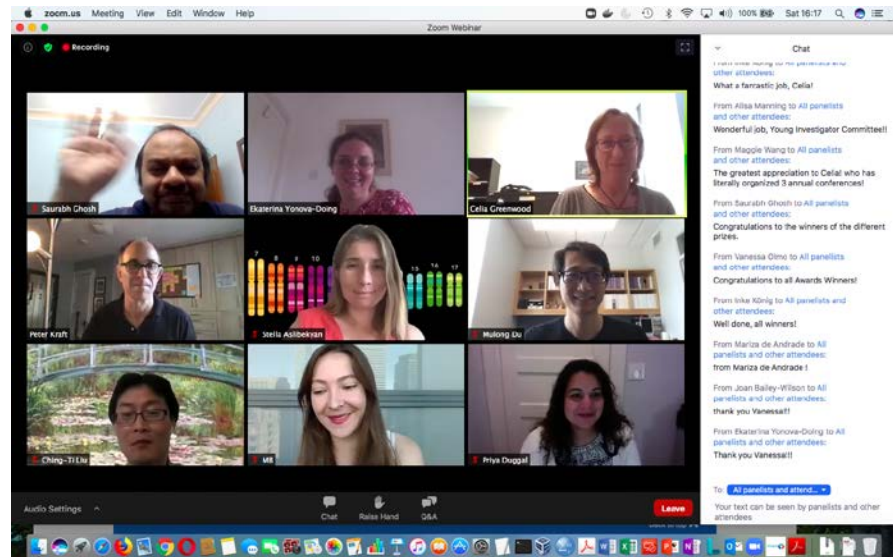
1. **Dongjing Liu** University of Pittsburg
Transcriptome-Wide Association Study of Human Facial Shape Identifies Potential Mediating Genes
2. **Soyoung Jeon** University of Southern California
Multi-ethnic Genome-wide Association Study of Acute Lymphoblastic Leukemia
3. **Subrata Paul** University of Colorado
MixFAR: a Multiphenotype Association Model that Detects Structure in Secondary Phenotype Space and Increases Power of Association Tests

IGES 29th Annual Meeting • July 2-4, 2020

The winners of the best paper in Genetic Epidemiology 2019 were Lai Jiang and colleagues for their paper “Constrained instruments and their application to Mendelian randomization with pleiotropy” *Genet Epidemiol* 2019 Jun;43(4):373-401. doi: 10.1002/gepi.22184.



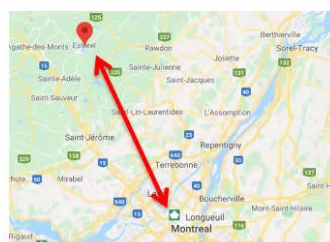
Final Farewells...



IGES 2021: October 16-18



Held in conjunction
with ASHG
(Montreal, October 19-23)



Venue: the Estérel
Resort in the
Laurentides
(driving time to Estérel
from Montreal is 1:45)

Committee Reports Latest news from IGES Committees

This section contains current news and announcements from the IGES Committees. We often have vacancies to fill on IGES committees. If you are interested in joining an IGES Committee, please contact the relevant Committee Chair listed on the IGES website, or email us at iges@geneticepi.org.

Scientific Program Committee

The Program committee was able to develop a rich program for IGES 2020 in spite of the changes enforced by the move to an online format. We congratulate the award winners. The James V. Neel Award for the best IGES presentation by a postdoctoral trainee was awarded to Myriam Brossard. The Roger Williams Award for the best IGES presentation by a student was awarded to Grace Png.

Ching-Ti Liu
Scientific Program Committee Chair

Communications Committee

Members of the Communications Committee have been active in managing the IGES website, Facebook, LinkedIn and Twitter pages. We use these media to advertise not only IGES news and events, but also happenings in genetic epidemiology that may be of interest to IGES members. We also maintain a section on the IGES webpage on relevant job position openings.

This year we have continued our initiative of publicising monthly “highlighted” papers (in any journal) by IGES members, and an “Editor’s pick” paper from each issue of Genetic Epidemiology.

Heather J. Cordell
Communications Committee Chair

Young Investigators’ Committee

We organised a program of online mentoring activities (via Zoom) as part of the IGES 2020 Online Meeting [#iges20stay@home](#)

The committee is recruiting additional members. Investigators interested in joining please contact the committee chair: Kate Yonova-Doing (ey246@medschl.cam.ac.uk).

Ekaterina Yonova-Doing
Young Investigators’ Committee Chair

2020 IGES Officials

The names of all the IGES officials are available on our **website**:

<https://www.geneticepi.org/organization>

Current **officers** are: President: Peter Kraft; Past-President: Celia Greenwood; President-Elect: Heike Bickeböllner; Treasurer: Julia Bailey; Secretary: Heather Cordell; Editor-in-Chief, Genetic Epidemiology: Sanjay Shete.

Board members comprise the officers and the following 6 people: Frank Dudbridge, Liz Gillanders, Jinko Graham, Jaya Satagopan, Pak Sham and Ele Zeggini.

The **Education Committee** is co-chaired by Stephanie Santorico and Todd Edwards.

The **ELSI Committee** is chaired by Ronnie Sebro.

This year's **Publications Committee** is chaired by Heike Bickeböllner (ex-officio).

The **Scientific Program Committee** for 2019 is chaired by Ching-Ti Liu.

The **Young Investigators' Committee** is chaired by Ekaterina Yonova-Doing.

The **Communications Committee** is chaired by Heather Cordell (ex-officio).

Please refer to the above website for the current respective committee members.

The **Wiley/Genetic Epidemiology Liaison Committee** is chaired by Mike Province. Members are Sanjay Shete, Angelo Canty, and Alexander Wilson.

The **IGES webmaster** is Sarah Gagliano. The **IGES Facebook contact** is Elizabeth Blue, the **Twitter contact** is Priya Duggal and the **LinkedIn contact** is Han Chen.

Membership and conference administration is organized by Vanessa Olmo.

IGES Web Site: <https://www.geneticepi.org>

IGES Facebook page: <https://www.facebook.com/geneticepi?ref=hl>

IGES Twitter page: <https://twitter.com/genepisociety>

IGES LinkedIn page: <https://www.linkedin.com/groups/12061041/>

IGES Facebook page exclusively for Young Investigators:

<https://www.facebook.com/pages/International-Genetic-Epidemiology-Society-Iges-Next-Generation/174416209303988?ref=hl>